



The Trivista Series

Triple Wide Modular Homes



Front View





CTF-400 "The Beaumont"
40'6" x 40'/46'9"/38' - 1,886 Sq. Ft.

*Artist Renderings
Optional Deluxe Exterior Shown
Some features shown may be optional*

Rear View

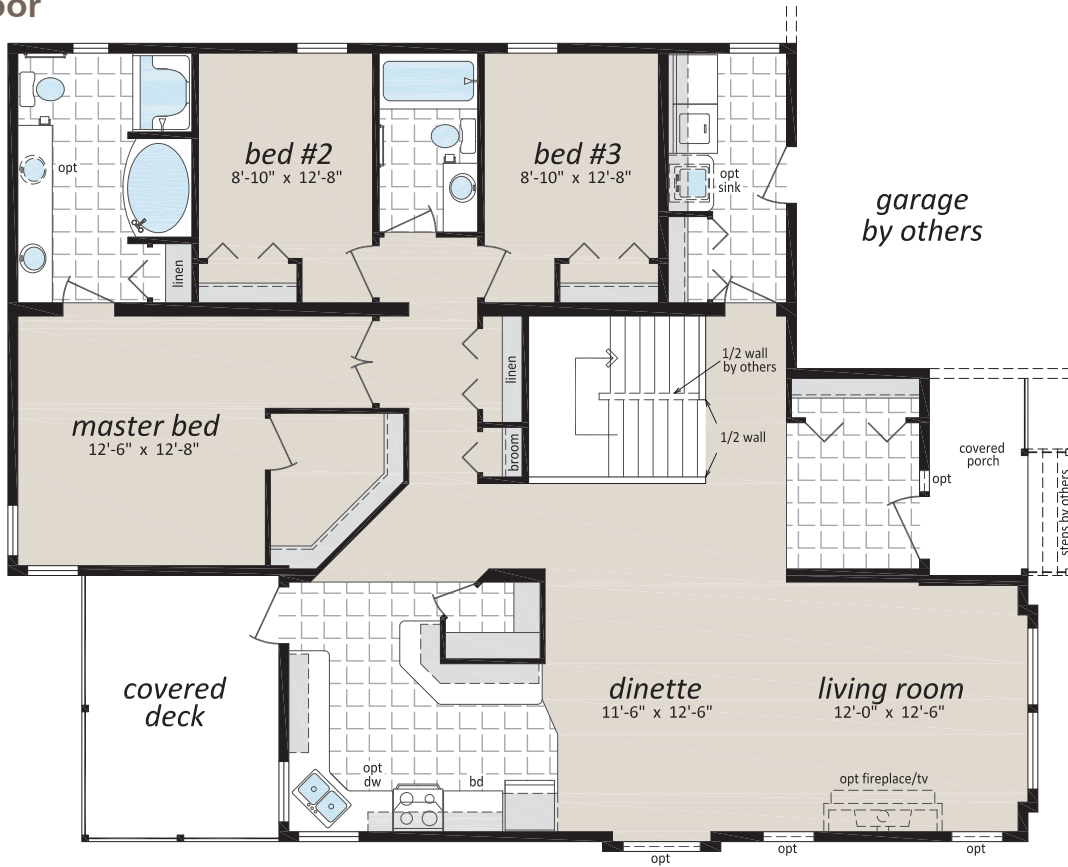


www.winfieldhomes.ca

Follow us:  



Main Floor



CTF-400 "The Beaumont"
40'6" x 40'/46'9"/38' - 1,886 Sq. Ft.

Proposed Basement Layout - By Others

Proposed Basement
Rental Suite
(By Others)

