



# The Trivista Series

## Triple Wide Modular Homes



Front View





**CTF-402 "The Gladstone"**  
40'6" x 33'/43'9"/48' - 1,890 Sq. Ft.

*Artist Renderings  
Optional Deluxe Exterior Shown  
Some features shown may be optional*

Rear View

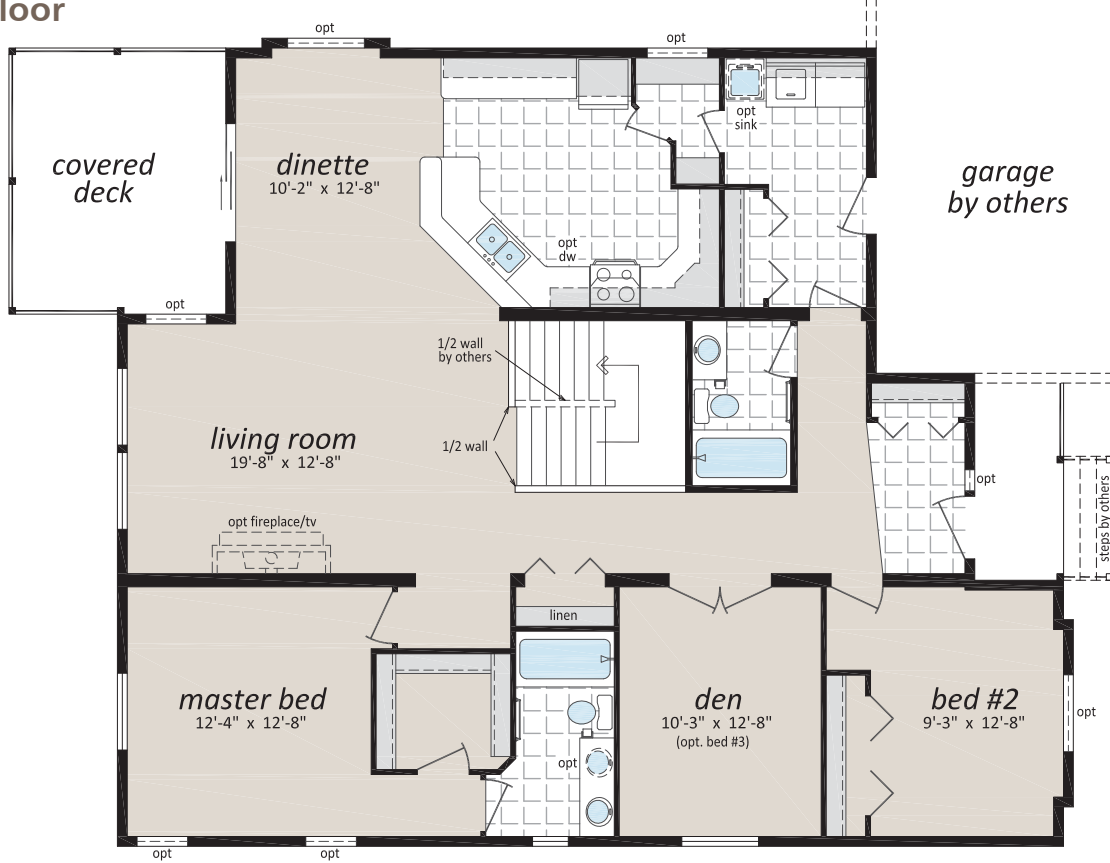


[www.winfieldhomes.ca](http://www.winfieldhomes.ca)

Follow us:  




**Main Floor**



### CTF-402 "The Gladstone"

40'6" x 33'/43'9"/48' - 1,890 Sq. Ft.

**Proposed Basement  
Layout - By Others**

 Proposed Basement  
Rental Suite  
(By Others)

