



# The Trivista Series

## Triple Wide Modular Homes



Front View





**CTF-404 "The Goldstream"**  
40'6" x 40'/35'6"/46' - 1,890 Sq. Ft.

*Artist Renderings  
Optional Deluxe Exterior Shown  
Some features shown may be optional*

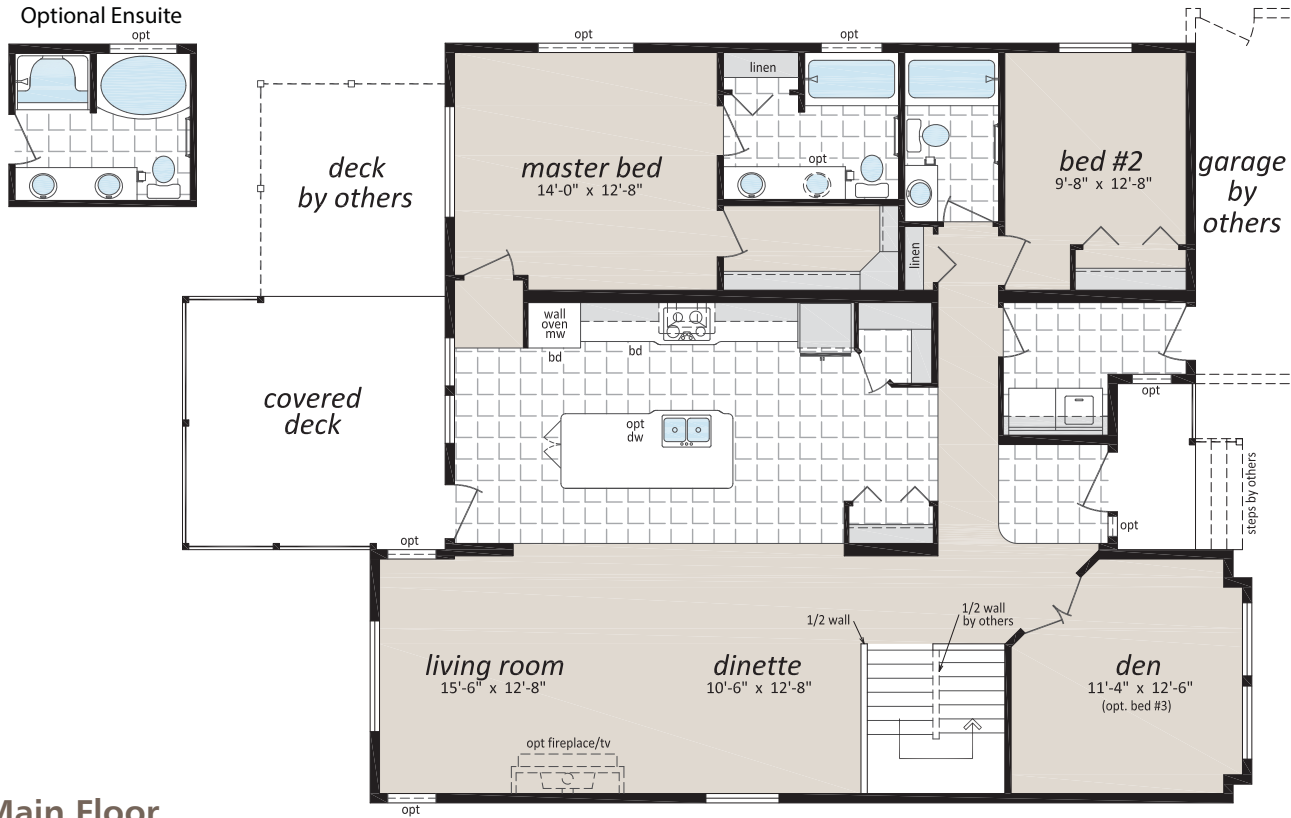
Rear View



[www.winfieldhomes.ca](http://www.winfieldhomes.ca)

Follow us:  





Main Floor

### CTF-404 "The Goldstream"

40'6" x 40'/35'6"/46' - 1,890 Sq. Ft.

Proposed Basement  
Layout - By Others

Proposed Basement  
Rental Suite  
(By Others)

